



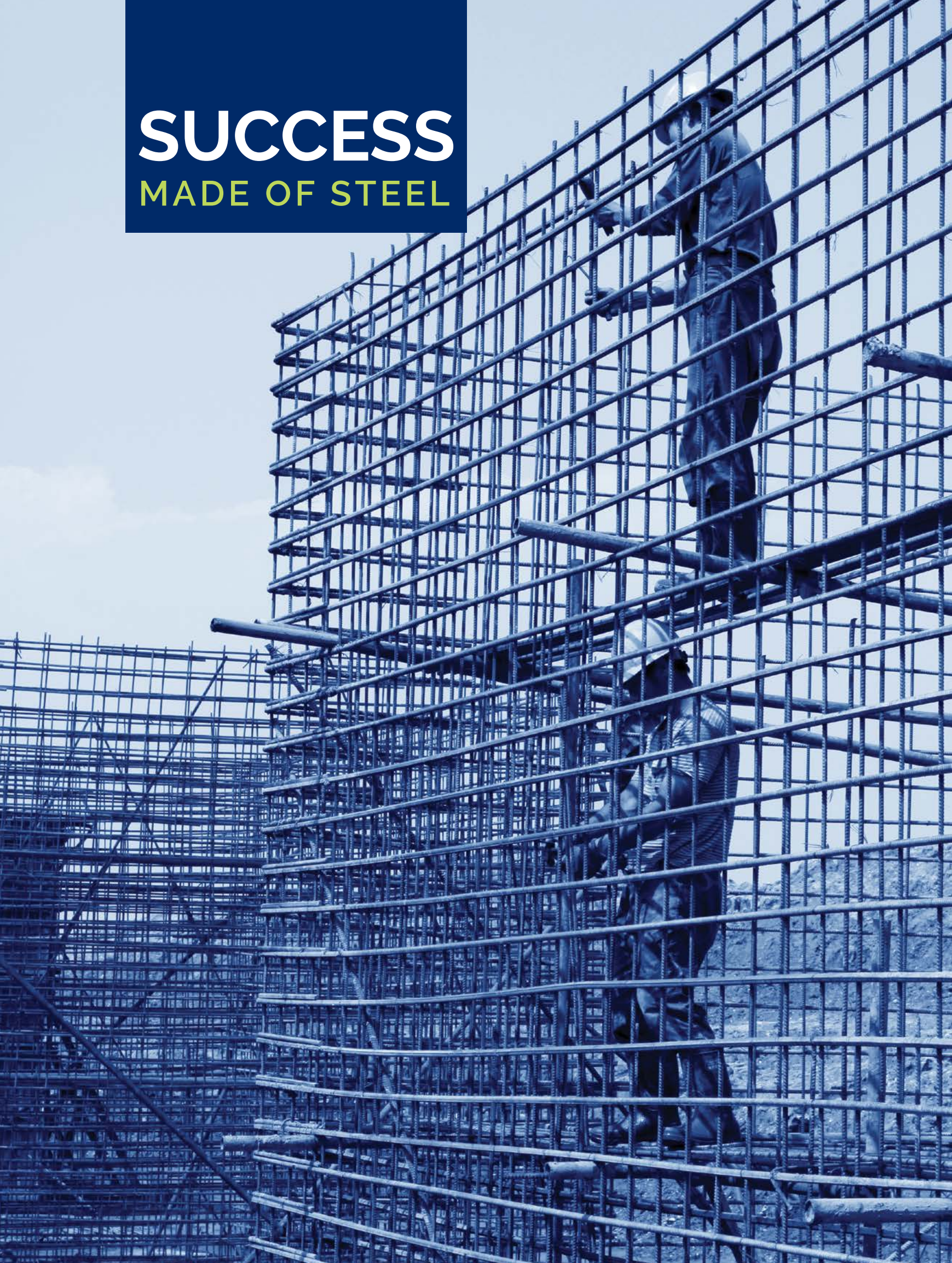
GULF STEEL
L.L.C

A part of Al Nasser Industrial Entp.L.L.C.

www.gulfsteeluae.com

MADE IN UAE

SUCCESS
MADE OF STEEL



CONTENTS

About Us	2
Top of the Line Facilities	5
Quality Product Range	7
Product Specifications	9
Manufacturing Process	10
Quality Control & Assurance	14
Physical & Chemical Testing Laboratory	15
Certifications & Bar Markings	16
Our Projects	17
Health & Safety	18



AL NASSER HOLDINGS

www.anholdings.com

When spirit and passion combine

Driven by an indomitable spirit of national pride and led by the passion of establishing an empowered group of companies with an international footprint, **Al Nasser Holdings** was incorporated in Abu Dhabi circa 1977. Since then, the group has grown by leaps and bounds to become one of the leading private sector conglomerates in the UAE with a diverse portfolio of economic and industrial activity.



AL NASSER INDUSTRIAL ENTERPRISES

GULF STEEL



Al Nasser Industrial Enterprises L.L.C.

In 1992, with an explosion in the construction industry witnessed across the Middle East region, there arose the need to spin off a new company to forge ahead into robust, new growth industrial areas and thus **Al Nasser Industrial Enterprises L.L.C (ANIE)** was set up as a wholly owned subsidiary of **Al Nasser Holdings** to spearhead the group's foray into industrial ventures.

Today, ANIE has grown into a trusted entity with an employee strength of over 500 and numerous operating ventures in diverse fields such as steel billets, reinforcement steel bars, structural fabrication, PE roto molding, blow molding and industrial intermediates across the MENA region. ANIE has led the way and is regarded as one of the leading private sector players in the UAE steel industry.

Gulf Steel

Nothing but strength. Solid strength.

Set up in 1992 under the reputed **Al Nasser Industrial Enterprises L.L.C Group**, Gulf Steel is ranked among **the top producers** of reinforcement steel bars in the **U.A.E.** 30 years on, Gulf Steel has gone from strength to strength, outpacing projections to become the leading steel manufacturer in the **UAE**.

Advanced technologies and superior engineering skills have ensured the production of high-quality steel products; reinforcement steel bars (Rebars)/cold-ribbed bars in coils, plain bars, square bars, flat Bars and serrated flat bars.

The core values of the company remain as strong as the steel that's manufactured.

VISION To be the steel manufacturer of choice in the Middle East supplying quality products and services and meeting customer expectations

MISSION Ensure that the superior quality of the product coupled with our exceptional value-added services always meets the expectations of our stake holders, customers, employees and the environment.

CORE VALUES

- Team work
- Integrity
- Professionalism
- Customer Services
- Transparency



THE CAPACITY TO BUILD BETTER

A symbiotic relationship of technology and environment



Since its inception in 1992, **Gulf Steel**, has consistently endeavoured to enhance its products and services through continuous development of advanced technologies in-house. The quest to achieve sustainable development is paramount. Thus, environment, health and safety issues are at the forefront, at all times.

Whilst maintaining its position as a top-quality steel producer, **Gulf Steel** has also expanded its customer base beyond the boundaries of the UAE and caters to customers in other rapidly growing markets across the **GCC region**.

Gulf Steel is a ISO 9001:2015 certified company, we manufacture hot rolled low carbon steel (Deformed Steel Bars) through **Thermo Mechanical Treatment process (TMT)** in sizes ranging from 8 mm to 32 mm and in lengths varying from 6 meters to 12 meters and also produces plain, flat, square and serrated bars.

Gulf Steel is currently capable of rolling out **300,000 TPA** of deformed steel bars, **36,000 TPA** of cold ribbed bars in coils and cut to length. The company is also capable of supplying **30,000 TPA** cut & bend steel to construction sites as per approved BBS.

The exponential growth witnessed by **Gulf Steel** in such a short span of time has presented a unique opportunity to expand capacities, diversify the scope of operations and expand the range of product offering.





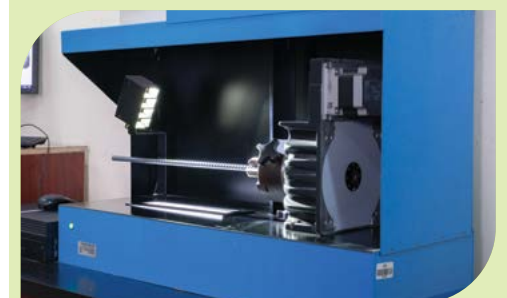
TOP OF THE LINE FACILITIES

In relentless pursuit of quality

Gulf Steel's state-of-the-art production facility is located at Musaffah, Abu Dhabi. This is where technology, precision and well-planned processes come together to craft the finest construction steel products.

Leading edge processes

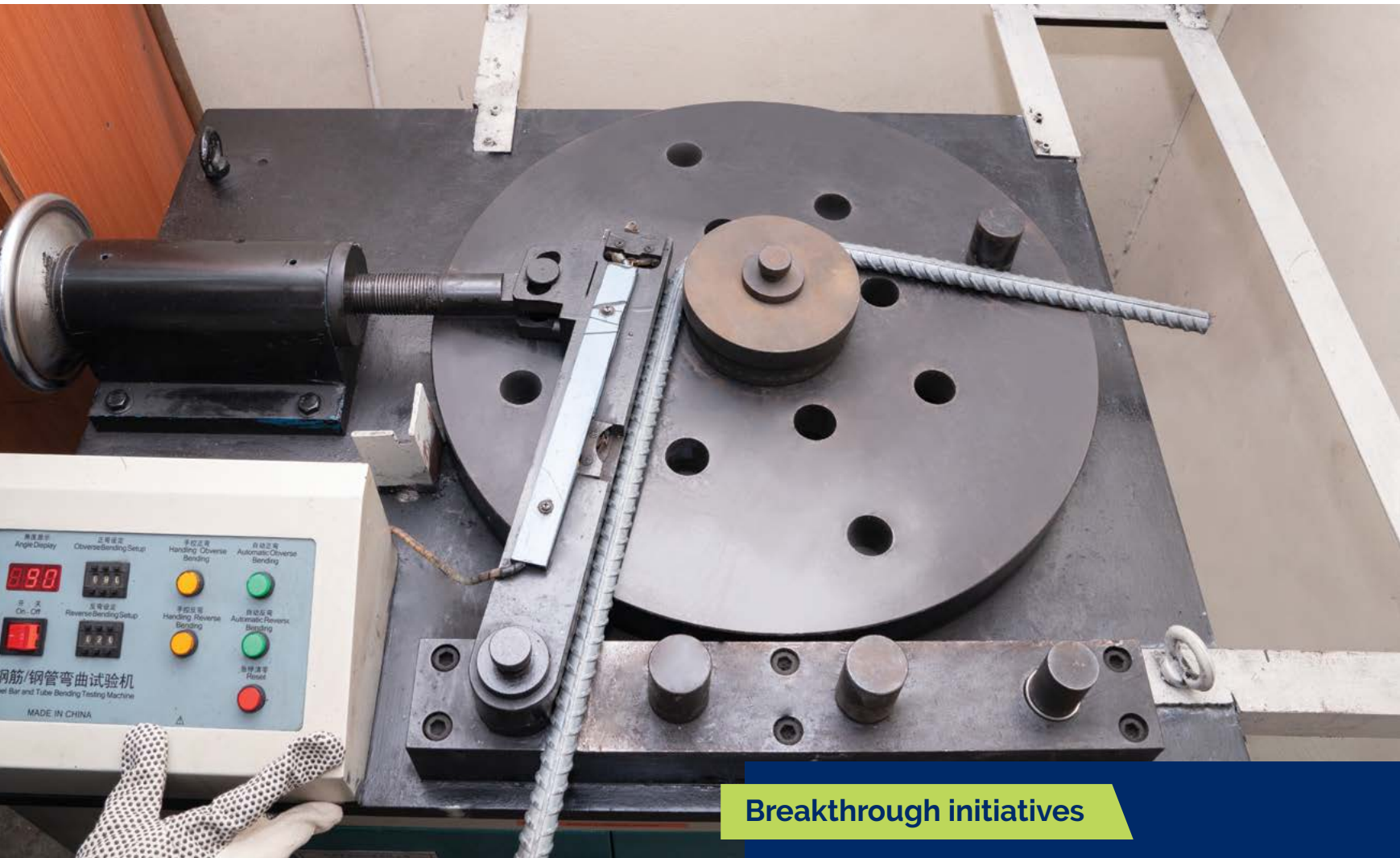
- Rolling Mills with TMT Process, Automatic Cooling Bed and Material Handling Equipment
- Cold Ribbing Lines
- Advanced straightening and cutting lines
- A fully equipped testing lab encompassing a Universal Testing Machine, Re-Bending Machine, Spectro Meter, Nitrogen Analyzer and Rib Measuring Instrument.



CUT & BEND FACILITIES

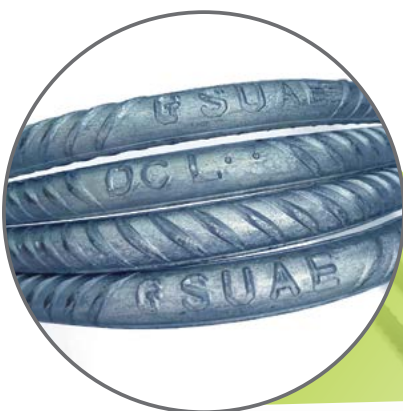
Constantly upgrading

Cut and bend is a value-added solution for the optimization and fabrication of rebars in a factory environment. Steel bars are cut to **custom sizes** and bent to **specific shapes**. They are accurate and specific since the entire manufacturing process is automated. This also allows us to **reduce cost and time** elements and enhance safety to the region's large-scale construction projects. We also proactively invest in technology that allows us to deliver superior support to our clients.



Breakthrough initiatives

- Cadormatic Shear Line RS 300 and Chain Conveyor
- Automatic Double Bender
- Twinmaster 12S
- Heavy-Duty Rebar Bending Machines with Single Bending Tables
- Spiral Making Machines
- Manual Cutting Machines





QUALITY PRODUCT RANGE

The **Gulf Steel product mix** is an outcome of planned integration of the advanced industry-level equipment, technologies and best practices in sustainability.

We pride ourselves on being the perfect value-added partner for various industrial sectors; construction, oil & gas, shipping & logistics, etc. The focus when manufacturing has always been cutting edge equipment, latest technology and best practices in quality product. Our current product line comprises **Reinforcement bars** (Rebars), **flat bars** and **serrated bars**.



Reinforcement Steel Bars (Rebars)

Gulf Steel is prepared to take on the demands of the construction industry, manufacturing hot rolled **low carbon reinforcement steel bars** (Deformed Steel Bars) through Thermo- Mechanical Treatment (TMT) process, in sizes ranging from **8 mm to 32 mm** and in lengths ranging from **6 meters to 12 meters**. The reinforcement steel bars are produced adhering to BS/ASTM/SASO / ISO 6935 standards.

Product highlights:

- TMT-quenching production process for superior mechanical properties, flexibility and welding, and resistance to corrosion
- STANDARDS:
 - BS 4449:2005 Grade B 500B • SASO ASTM A615
 - ASTM A615 Grade 40/60 • ISO 6935-2 GR.500BWR
- Sizes: 8 mm to 32 mm, Length: Straight Length of 12 meters or customized lengths
- Range: 8 mm to 32 mm as per BS standard, certified by Dubai Central Laboratory and CARES, U.K.
- In addition certification for ISO 6935 from Kuwait, and SASO ASTM A615 standard from Saudi.



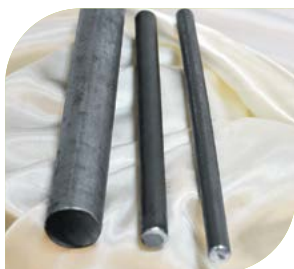
Flat Bars

Flat bars are available in various grades and sizes and are used across industries including engineering, construction, recycling, and automotive. **The material's fantastic versatility**, make it suitable for an array of applications such as support braces, ladder hangers, gate latches, duct work, overhead doors, heaters and bracing.



Serrated Bars

Gulf Steel serrated bars deliver excellent performance in application areas which are slippery, oily or moisture filled. They form a sort of anti-slip grating with their non-slip notches offering good grip. Serrated bars are manufactured using **mild carbon steel**. We offer a variety of serrated products in this category.



Square & Plain Bars

Square bars range: 9 mm to 20 mm hot rolled plain steel bars range: 8 mm to 32 mm diameter and are manufactured in accordance to international standards.



Epoxy Coated

Gulf Steel has partnered with local supplier for the application of epoxy coating conforming to **ASTM A775M-07b**.

PRODUCT SPECIFICATIONS

REINFORCEMENT/DEFORMED STEEL BARS

Type	Min Yield Strength (N/mm ²)	Min Tensile Strength (N/mm ²)	Standards	Sizes (Dia)
High Yield Bars (Deformed)	500	550	BS 4449 Grade B500 B	8 mm to 32 mm
	420	620	ASTM A 615, Grade 60	
	500	550	ISO 6935 - GR.500BWR	
Medium Yield Bars (Deformed)	280	420	ASTM A 615, Grade 40	8 mm to 32 mm
Cold Ribbed Steel Bars	460	510	BS 4482:2005	8 mm to 12 mm

Chemical Composition

Size Range (mm)	Product Specification	Process Route	Chemical Analysis					
			C%	Si%	Mn%	P% Max	S% Max	N% Max
8-20 Rebars	ASTM A615 Gr 40	Hot Rolled	0.25 Max	0.15-0.30	0.60-1.3	0.045	0.045	0.012
8-32 Rebars	ASTM A615 Gr 60	Quenching	0.25 Max	0.15-0.30	0.55-1.1	0.045	0.045	0.012
8-32 Rebars	BS 4449 Gr B500B	Quenching	0.24 Max	0.15-0.30	0.55-1.1	0.045	0.045	0.012
8-32 Rebars	SASO ASTM A615 Gr 60	Quenching	0.25 Max	0.15-0.30	0.60-1.3	0.045	0.045	0.012
8-32 Rebars	ISO 6935-2/Gr 500BWR	Quenching	0.24 Max	0.15-0.35	0.55-1.1	0.045	0.045	0.012

Dimensions

Nominal Diameter (mm)	No. of Bars per Bundle of (2 MT)	Nominal Weight (kg/m)	Nominal Cross Sectional Area (sq.mm)	Max. Average Rib Spacing (mm)	Transverse Rib Height (mm)		Longitudinal Rib Height (mm) Max
					Min	Max	
8	422	0.395	50.30	5.60	0.52	0.96	0.80
10	270	0.616	78.50	7.00	0.65	1.20	1.00
12	188	0.888	113.00	8.40	0.78	1.44	1.20
14	138	1.208	154.00	9.80	0.91	1.68	1.40
16	106	1.579	201.00	11.20	1.04	1.92	1.60
18	84	1.998	354.00	12.60	1.17	2.10	1.80
20	68	2.466	314.00	14.00	1.30	2.40	2.00
22	56	2.984	380.00	15.40	1.43	2.64	2.20
25	44	3.854	491.00	17.50	1.63	3.00	2.50
32	26	6.313	804.00	22.40	2.08	3.84	3.20

PLAIN STEEL BARS & SQUARE STEEL BARS

Type	Min Yield Strength (N/mm ²)	Min Tensile Strength (N/mm ²)	Standards	Sizes (Dia)
Plain Steel Bars	250	375	ASTM A 36	12-25 mm
	280	420	SASO ASTM A615 Gr 40	12-25 mm
	250	275	AISI 1006 to AISI 1012	5.5 to 10
Square Bars	250	375	ASTM A 36	8 to 20

Chemical Composition

Type	Size Range (mm)	Product Specification	Process Route	Chemical Analysis				
				C%	Si%	Mn%	P% Max	S% Max
Plain Bars	12-25 mm	ASTM A 36	Hot Rolled	0.26 Max	0.15-0.40	0.60-0.90	0.040	0.050
Plain Bars	12-25 mm	SASO ASTM A615 Gr 40	Hot Rolled	0.25 Max	0.15-0.30	0.60-0.90	0.040	0.050
Plain Bars	5.5-8 mm	AISI-1006 to AISI 1012	Cold Drawn	0.14 Max	0.10-0.30	0.45-0.60	0.040	0.040
Square Bars	9-20 mm	ASTM A 36	Hot Rolled	0.27 Max	0.15-0.30	0.60-0.90	0.040	0.050

SERRATED FLAT BARS

25mm - 45mm Width, 3mm - 8mm Thickness



A GLIMPSE OF OUR MANUFACTURING PROCESS

Managed by stringent
adherence to environmentally
friendly practices

Gulf Steel Industries produces Deformed Steel Bars from **prime quality** billets manufactured by our group company – **Emirates Steel Company L.L.C.** After receiving the billets and inspecting them, they are stacked according to the cast numbers. Pre-sized billets are charged to a pusher type, temperature-controlled Re-heating Furnace.



The heated billets are passed through various stands to arrive at the desired size. From the finishing stand, the bars are passed through a **Thermo Mechanical Treatment (TMT)** process whereby the hot bar is rapidly cooled by water to achieve high strength with high ductility. Due to rapid controlled cooling, the surface temperature of the bar reduces drastically and forms a martensite structure. The core of the bar remains fine grain ferrite perlite. This provides enhanced strength and ductility to the finished material.

Bars are cut by a **Flying Shear** to the required length and passed through twin channels to a walking beam type cooling bed. The cooled bars are scored using a finishing shear to the standard length (12 meters), bundled (2 tons) and sent for storage in the finished goods storage area.



“

Superior quality.
Exceptional
value-added
services.

”





QUALITY CONTROL & ASSURANCE

At **Gulf Steel**, quality is a visible outcome of best practices rigorously followed in letter and spirit. State of the art technologies and industry guidelines are key inputs in achieving this goal. The quality control department is

well equipped with superior computerized monitoring and testing systems and the Engineering and R&D Division continuously strives towards the betterment of product quality.



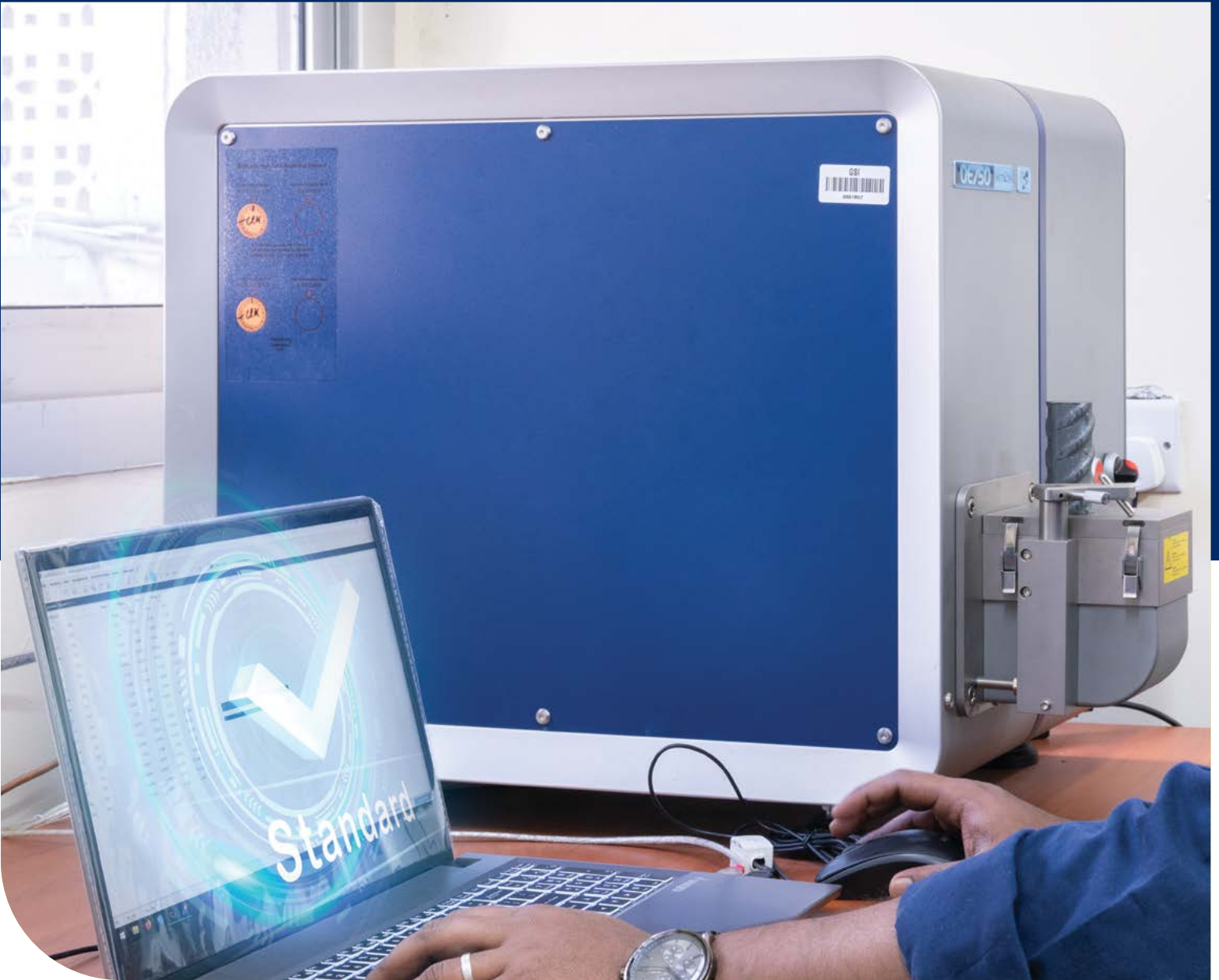
Gulf Steel has internalized and practices **Total Quality Management (TQM)** systems at all stages of production.

- Careful selection of basic raw material
- Chemical analysis of steel scrap used for re-melting in the Induction Furnace
- Chemical analysis of hot material samples
- Analysis of the physical and chemical properties of the Billets
- Re-heating furnace temperature check
- Checking size and gauge at the final stage
- Checking of the final mechanical, chemical and physical properties of finished product



We're proud to be certified by Dubai Central Laboratory and CARES, U.K. for BS Standard, whilst strictly adopting BS standards.

In addition certification for ISO 6935 from Kuwait, and SASO ASTM A615 standard from Saudi.



PHYSICAL AND CHEMICAL TESTING LABORATORY

Gulf Steel is fully equipped with the **best-in-class equipment** required for quick testing and reporting.

Gulf Steel produces high-grade TMT construction rods. The mill is technologically advanced and uses semi-automatic rolling to ensure quality. Due to the low carbon content and strict quality control, the TMT process bars do not lose strength at the weld joints, are highly flexible and provide top-grade elongation. The special design of the bars allows for excellent bonding properties and longer life.

State-of-the-art facilities

- Nitrogen and Boron Analyzer
- Three Universal Tensile Testing Machines (Two 1000 KN and one 600 KN capacities)
- Extensometer
- Bending machine for Bend/Re-bend Test.
- Optical Emission Spectrometer
- Rib Measuring Instrument.

CERTIFICATES & ACCREDITATIONS

Gulf Steel Industries Co. Ltd.L.L.C.  الشركة الخليجية للصناعات الفولاذية المحدودة ذ.م.ج.
Limited Liability Company شركة ذات مسؤولية محدودة
Capital : Dhs. 4,500,000 رأس المال ٤,٥٠٠,٠٠٠ درهم

TEST CERTIFICATE

CONSIGNEE: _____

TEST REPORT NO.: 111/04-05-23
CERTIFICATE NO.: GSI/ 0949/23
DATE: 04-05-2023

SPECIFICATION / CODE: BS4449-2005 / GR B 500 B

DESCRIPTION: 20 MM Diameter Deformed Steel Bar. Bar Marking: _____

CAST NO: E 32982                    

Mark #	Nominal Size (mm)	Mass (Kg)	Length (mtr.)	Mass / mtr (kg / mtr.)	Effective Cross Sectional Area (mm²)	Length of Finish Product	No of Pieces/ Bundle
23 0949	20	1.444	0.601	2.403	306.07	12 Meter (-0,+50 mm)	68

PHYSICAL PARAMETERS

(Test Specification : BS4449-2005 / GR B 500 B)

Mark #	Size (mm)	Sl. No.	Mass/ mtr (kg/mtr)	Nominal Area (mm²)	Yield Strength (Mpa)	Tensile Strength (Mpa)	Ratio (R _m /R _e)	Elong ² (A _g) %
23 0949	20	1	2.406	314.00	539.97	653.50	1.21	7.08
		2	2.395	314.00	539.17	653.50	1.21	8.46
		3	2.425	314.00	556.85	658.15	1.18	7.51

CHEMICAL ANALYSIS

(Test Specification : BS4449-2005 / GR B 500 B)

Mark #	Size (mm)	C (%)	Si (%)	Mn (%)	P (%)	S (%)	Cr (%)	Mo (%)	Ni (%)	Cu (%)	V (%)	N (%)	B (%)	C _{eq} (%)
23 0949	20	0.20	0.23	0.64	0.017	0.023	0.151	0.021	0.058	0.090	0.008	0.0108	0.0003	0.36

RE BEND TEST

(Test Specification : BS4449-2005)

Mark #	Size (mm)	Results
23 0949	20	Pass

CERTIFICATE COMMENTS:
The above test results meet the requirements of steel bars as per BS4449 GR B 500 B
Materials are free from harmful Radio-active element.
Cares Cloud Digital Record Number: 17733288
CARES Dispensation Reference - DU/219/20

Based on BS EN 10204 type 3.1 requirements
Process Route: QST

GSI/INS/TC-02
Issue / Revision: 0/0

QC INSPECTOR
DATE OF TEST: 04-05-2023
QC ENGINEER

Head Office: 5th Floor, Live Tower, Capital Centre - P.O. Box 44603 Abu Dhabi U.A.E.
Tel.: +971 - 2 - 5059160 - Fax: +971 - 2 - 6318007
E-mail: info@emirates.net.ae www.emirates.net.ae

Factory: P.O. Box 9054, Musaffar, Abu Dhabi - U.A.E. Tel.: +971-2-5059160, Fax: +971-2-6318007
E-mail: info@emirates.net.ae www.emirates.net.ae

المكتب الرئيسي: الطابق الخامس، برج ليفا، مركز العاصمة - صندوق بريد 44603 أبو ظبي الإمارات العربية المتحدة
الهاتف: +٩٧١ - ٢ - ٥٠٥٩١٦٠ - الفاكس: +٩٧١ - ٢ - ٦٣١٨٠٠٧
البريد الإلكتروني: info@emirates.net.ae www.emirates.net.ae

المصنع: صندوق بريد ٩٠٥٤، مسافر، أبو ظبي - الإمارات العربية المتحدة
الهاتف: +٩٧١-٢-٥٠٥٩١٦٠، الفاكس: +٩٧١-٢-٦٣١٨٠٠٧
البريد الإلكتروني: info@emirates.net.ae www.emirates.net.ae



Validate with the Cares Cloud App



Validate with the Cares Cloud App



BAR MARKINGS

BS 4449:2005 GR B500B

/// GS UAE //////////////////////////////////////

/// DCL ..////////////////////./-./////////////////////./-./



FEW OF OUR PRESTIGIOUS PROJECTS

UAE

- Al Barakah Nuclear Power Plant
- Satrah Al Razboot Project - Owner- ADMA OPCO
- Mirfa IWPP / UAE Mirfa Project
- Ethylene Plant EU3 Project
- Ruwais Refinery Expansion
- Rixos Hotel, Saadiyat Island, Abu Dhabi
- Glamz by Danube, U.A.E
- Commercial & Residential building at DIP-2, Dubai
- Khor Al Raha Development Project, Al Raha, Abu Dhabi
- Adnoc Refining Crude Flexibility Project
- BAPS Hindu Mandir

KSA

- Jeddah South Thermal Power Plant (Owner) - Saudi Electricity Company
- Shuqaiq Steam Power Plant (Owner) - Saudi Electricity Company
- King Khalid University in Abha

Kuwait

- Small Boat Harbours Project (Owner) - Kuwait Oil Company

Qatar

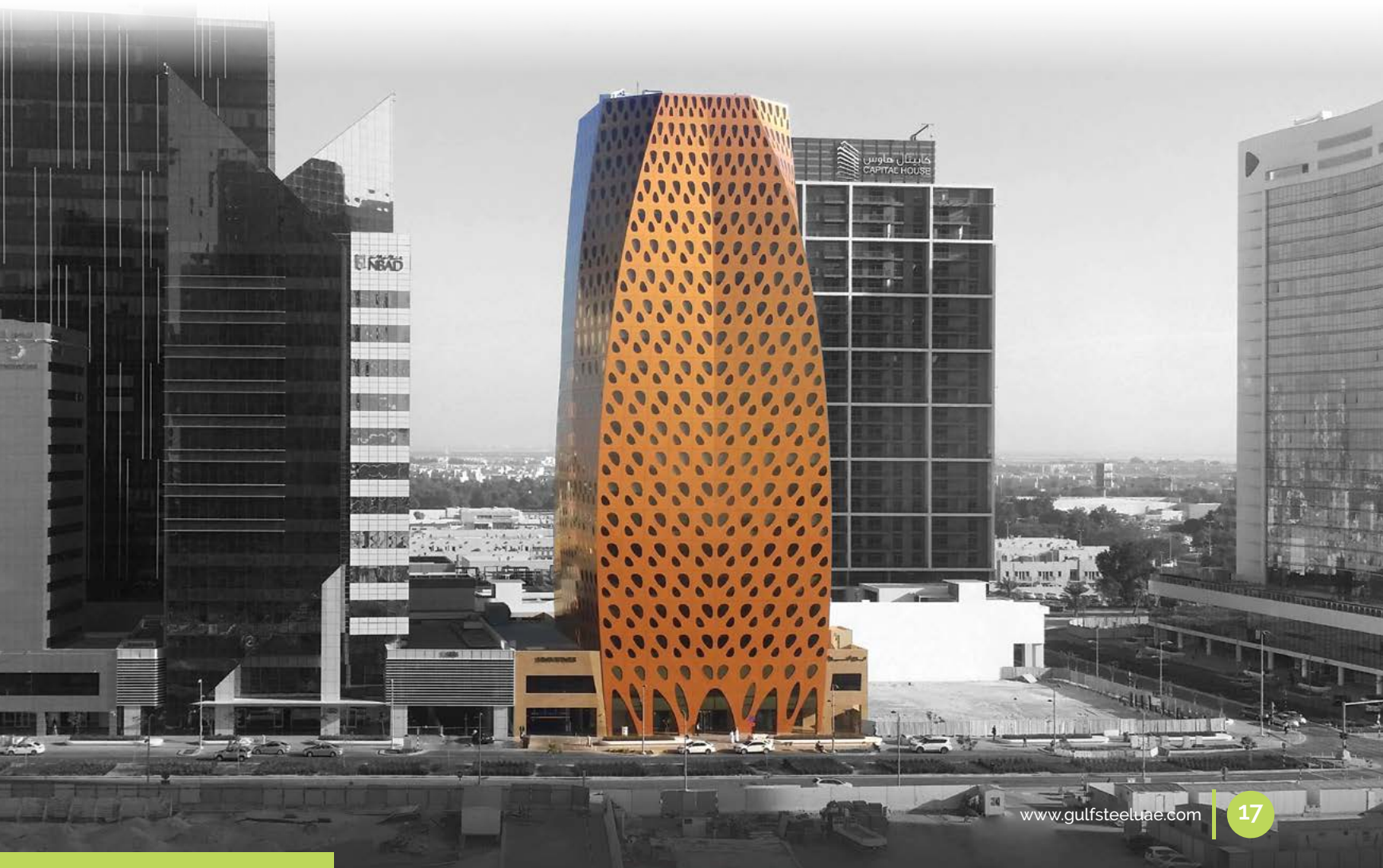
- Rapo Project, Raslaffan Industrial Area

Maldives

- Housing Project in Maldives

Iraq

- Zubair - Permanent Power Generation OIL Field Development (Owner) - South Oil Company of the Iraqi Ministry of OIL (SOC) Iraq



ENVIRONMENTALLY CONSCIOUS, COMMITTED TO HEALTH & SAFETY

Gulf Steel OHSMS system is certified by the Industrial Development Bureau and a third party inspection is done every year to check the effectiveness of the system.

Gulf Steel is committed to sustainability and preserving the environment. We adopt every possible measure to ensure the safety of our planet and the people who work for us.



In keeping with the environmental philosophy, the company includes, supports and monitors the following:

- Total compliance with all applicable statutory requirements and a few more of our own determination
- Extensive programs to prevent pollution, improve health, safety, conservation and waste reduction
- Continuous improvement of environmental and occupational health and safety standards through the application of efficient systems and procedures
- Educating and training staff members to behave in an environmentally responsible manner

Gulf Steel believes that care for environment is essential and a must, both in terms of social responsibilities and for the future of the business.





GULF STEEL
L.L.C

A part of Al Nasser Industrial Entp.L.L.C.

    / gulfsteeluae

www.gulfsteeluae.com

Factory/ Sales Office

P.O.Box 9054, Abu Dhabi, U.A.E.

Tel: +971 2 5510325 / 5510098

Fax: +971 2 5510301

Email: glfsteel@emirates.net.ae

Head Office

P.O. Box: 44903

5th Floor, Liwa Tower, Capital Centre

Abu Dhabi, UAE

Tel: +971 2 505 9160

Fax: +971 2 631 8007